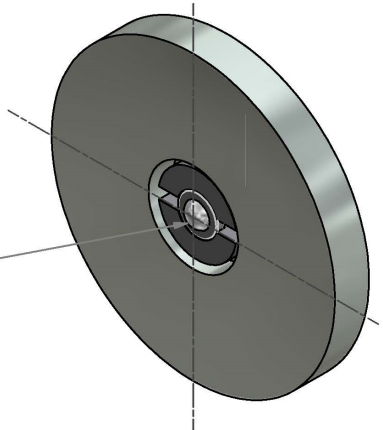
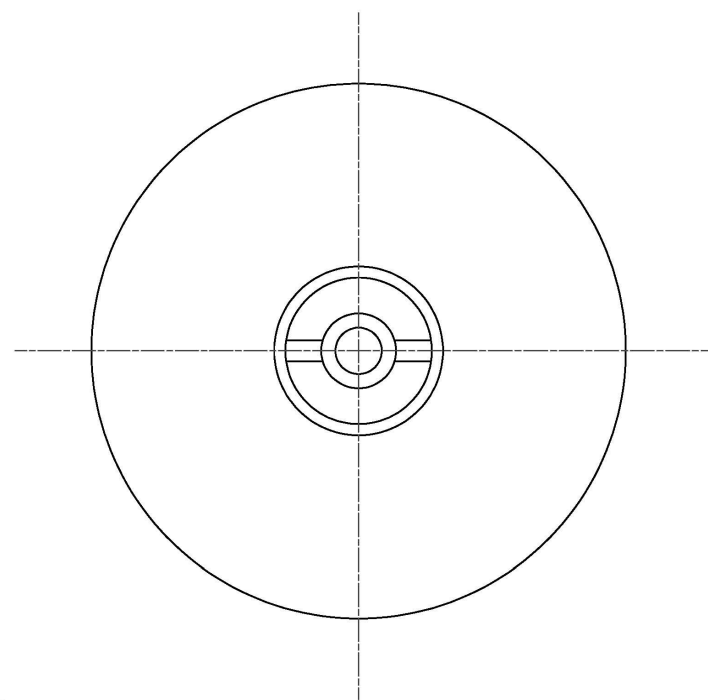
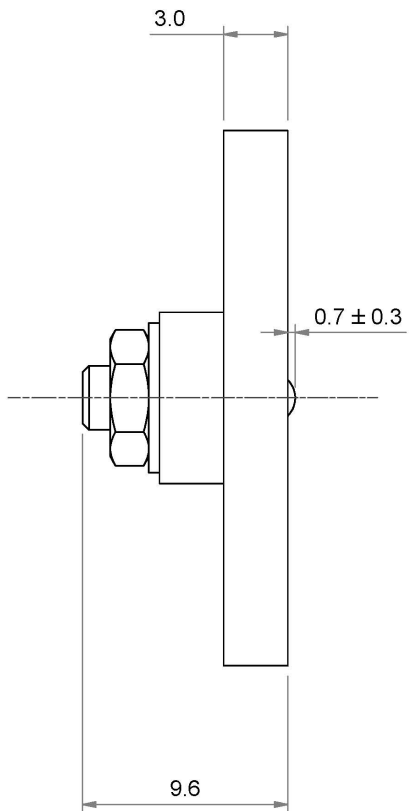


REVISION HISTORY			
REV	DESCRIPTION	APPROVED	DATE
A	REF MOD 0235	RWK	28/09/2011



ARMATURE MOUNTING SHOULDER SCREW
 DRILLED OUT TO INCORPORATE A SPRING
 LOADED BALL PLUNGER PROVIDING APPROX.
 2N SEPARATING FORCE WITH A BALL
 PROTRUSION OF APPROXIMATELY 0.4mm
 TO 1.0mm ABOVE ARMATURE SURFACE.

ARMATURE DETAILS :
 TYPE GZZE 025
 FITTED WITH FLEXIBLE MOUNTING WASHER,
 STEEL FORM 'A' WASHER AND LOCKNUT, AND
 INCORPORATING A 3MM STAINLESS STEEL
 SPRING PLUNGER.

THIS DESIGN AND PRINT IS COPYRIGHT AND IS THE PROPERTY OF
 MAGNET SCHULTZ LTD. IT MUST NOT BE COPIED NOR MUST ITS
 CONTENTS BE DIVULGED TO ANY THIRD PARTY WITHOUT PRIOR
 WRITTEN PERMISSION. ITS ACCEPTANCE FOR THE PURPOSES OF
 INFORMATION AND/OR QUOTATION SHALL IMPLY AN AGREEMENT
 ON THE PART OF THE RECIPIENT NOT TO USE IT FOR ANY OTHER
 PURPOSE AND TO OBSERVE THE FOREGOING CONDITIONS. THIS
 PRINT MUST BE RETURNED WHEN NO LONGER REQUIRED FOR
 THE PURPOSE FOR WHICH IT WAS SUPPLIED.

1. REMOVE ALL SHARP EDGES & BURRS
 2. A RAD OR CHAMFER OF 0.3 MAX IS PERMITTED IN CORNERS OF
 BLIND HOLES RECESSES & STEPS

GENERAL TOLERANCES TO EN22768-1:1993, GEOMETRIC
 TOLERANCES TO EN22768-2:1993, UNLESS STATED OTHERWISE.
 TOLERANCE CLASS:

A3 THIRD ANGLE
 PROJECTION

DIMENSIONS IN MM UNLESS
 STATED OTHERWISE.
 DO NOT SCALE - IF IN DOUBT ASK

**MAGNET
 SCHULTZ**

MAGNET SCHULTZ Ltd
 3-4 Capital Park, Old Woking,
 Surrey GU22 9LD, England
 Phone +44 (0)1483-794700 Fax -757298
 Email: sales@magnetschultz.co.uk

Drawn: **DWS** Date: **28/09/2011** Checked: Date:

Client:

Description: **SPRING LOADED 25mm
 ARMATURE**

Finish: **See Notes**

SHEET 1 OF 2 SHEETS

Dwg No: **AP3887** Issue: **A**