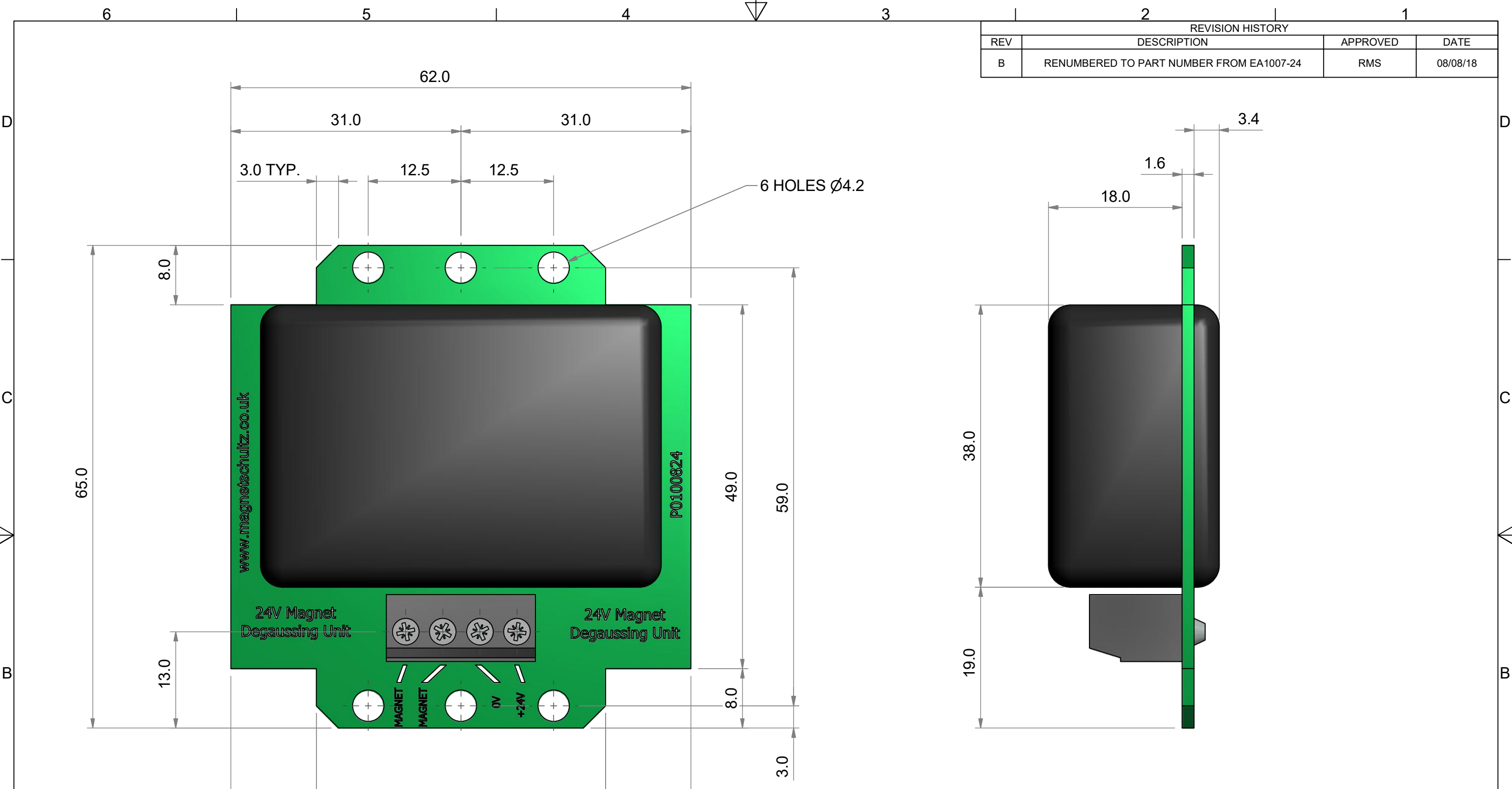


REVISION HISTORY			
REV	DESCRIPTION	APPROVED	DATE
B	RENUMBERED TO PART NUMBER FROM EA1007-24	RMS	08/08/18



- DESIGNED FOR USE WITH A SINGLE ELECTROMAGNET, MAGNET SCHULTZ ELECTROMAGNETIC RANGE 'GMH-GZZ' REFERS.
- CANCELS BETWEEN 50% TO 90% OF RESIDUAL MAGNETISM (REMANENCE), ACCORDING TO ELECTROMAGNET SIZE AND APPLIED CONDITIONS.
- FOR OPTIMUM PERFORMANCE ALLOW A MINIMUM OF 20 SECONDS BETWEEN OPERATIONS

<p>THIS DESIGN AND PRINT IS COPYRIGHT AND IS THE PROPERTY OF MAGNET SCHULTZ LTD. IT MUST NOT BE COPIED NOR MUST ITS CONTENTS BE DIVULGED TO ANY THIRD PARTY WITHOUT PRIOR WRITTEN PERMISSION. ITS ACCEPTANCE FOR THE PURPOSES OF INFORMATION AND/OR QUOTATION SHALL IMPLY AN AGREEMENT ON THE PART OF THE RECIPIENT NOT TO USE IT FOR ANY OTHER PURPOSE AND TO OBSERVE THE FOREGOING CONDITIONS. THIS PRINT MUST BE RETURNED WHEN NO LONGER REQUIRED FOR THE PURPOSE FOR WHICH IT WAS SUPPLIED.</p>	<p>1. REMOVE ALL SHARP EDGES & BURRS 2. A RAD OR CHAMFER OF 0.3 MAX IS PERMITTED IN CORNERS OF BLIND HOLES RECESSES & STEPS</p>	<p>A3 THIRD ANGLE PROJECTION</p>	<p> MAGNET SCHULTZ MAGNET SCHULTZ Ltd 3-4 Capital Park, Old Woking, Surrey GU22 9LD, England Phone +44 (0)1483-794700 Fax -757298 Email: sales@magnetschultz.co.uk</p>	<p>Material: Various Description: DEGAUSSING UNIT 24VDC</p>	<p>Finish: Clean SHEET 1 OF 1 SHEETS</p>
	<p>GENERAL TOLERANCES TO EN22768-1:1993, GEOMETRIC TOLERANCES TO EN22768-2:1993, UNLESS STATED OTHERWISE. TOLERANCE CLASS:</p>	<p>DIMENSIONS IN MM UNLESS STATED OTHERWISE. DO NOT SCALE - IF IN DOUBT ASK</p>		<p>Drawn: RMS Date: 08/08/2018 Checked: DWS Date: 08/08/2018</p>	<p>Drg No. P0100824 Issue B</p>