



Armature for solenoids

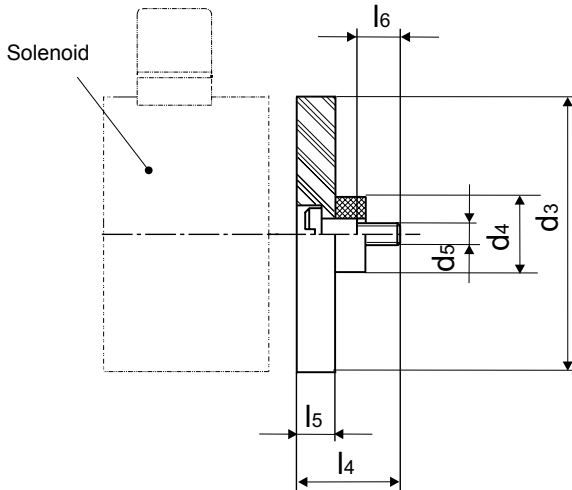


Fig. 5: Type G ZZ E 020 X 00 A01
to G ZZ E 100 X 00 A01
(size 020-030: ... D01)

G ZZ E								
Size	020	025	030	040	050	065	080	100
Dim.	Dimensions in mm							
d ₃	20	25	30	40	50	65	80	100
d ₄	7	8	10,5	10,5	10,5	13,5	16	21,5
d ₅	M2,5	M3	M4	M4	M4	M5	M6	M8
l ₄	8,5	9,5	14	14	15	19	23	26
l ₅	2,5	3	5	5	6	8	10	12
l ₆	3,5	4,5	6	6	6	7	9	11

Design with pin-socket on request

Order example

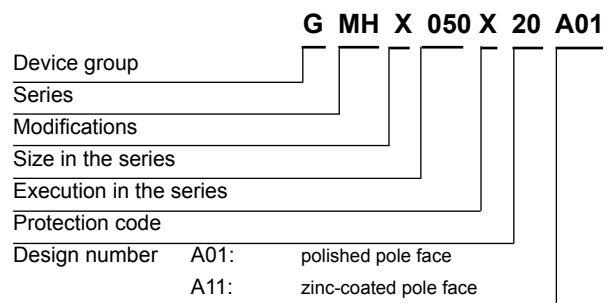
(Holding magnet without armature)

Type G MH X 050 X20 A01
Voltage == 24 V DC
Operating mode S1 (100 %)

(Holding magnet with armature)

Type G MH X 050 X20 A01
G ZZ E 050 X00 A01
Voltage == 24 V DC
Operating mode S1 (100 %)

Type code



Permanent holding magnets see part lists
G MP and **G MP ... B01**.

Specials designs

Please do not hesitate to ask us for application-oriented problem solutions. In order to find rapidly a reliable solution we need complete details about your application conditions. The details should be specified as precisely as possible in accordance with the relevant -Technical Explanations.

If necessary, please request the support of our corresponding technical office.