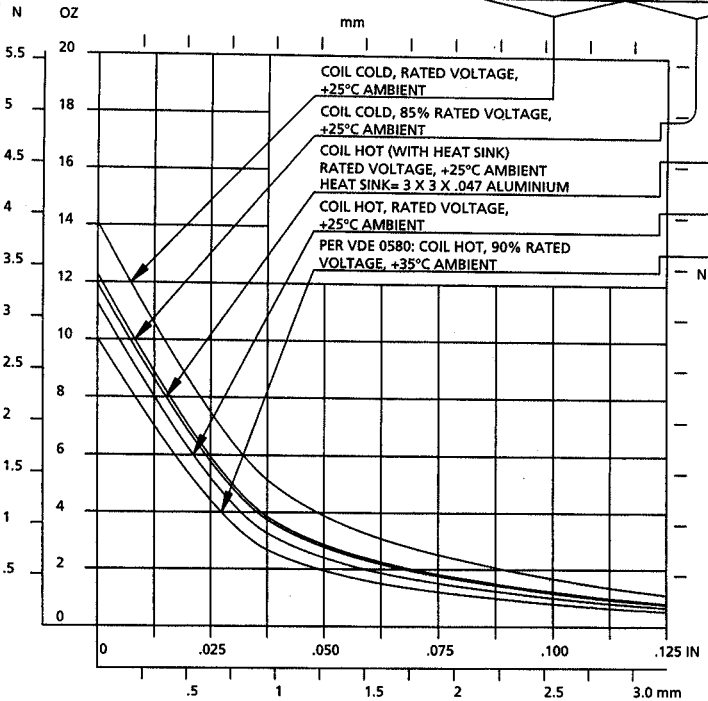


INTERMITTENT DUTY

STROKE				FORCE DATA							
INCHES	mm	OZ	N	OZ	N	OZ	N	OZ	N	OZ	N
HOLDING	HOLDING	14.08	3.91	12.28	3.42	11.94	3.32	11.29	3.14	10.04	2.79
.010	0.25	11.26	3.13	9.54	2.65	9.28	2.58	8.65	2.40	7.60	2.11
.025	0.64	7.48	2.08	5.94	1.65	5.78	1.61	5.21	1.45	4.43	1.23
.050	1.27	3.90	1.08	2.87	0.80	2.79	0.78	2.40	0.67	1.95	0.54
.100	2.54	1.68	0.47	1.21	0.34	1.17	0.32	1.00	0.28	0.80	0.22
.125	3.18	1.11	0.31	0.81	0.23	0.78	0.22	0.67	0.19	0.53	0.15



MAGNET-SCHULTZ OF AMERICA, INC.
401 PLAZA DRIVE WESTMONT, IL 60559

ON TIME	5 Seconds
OFF TIME	15 Seconds
DUTY CYCLE	25%

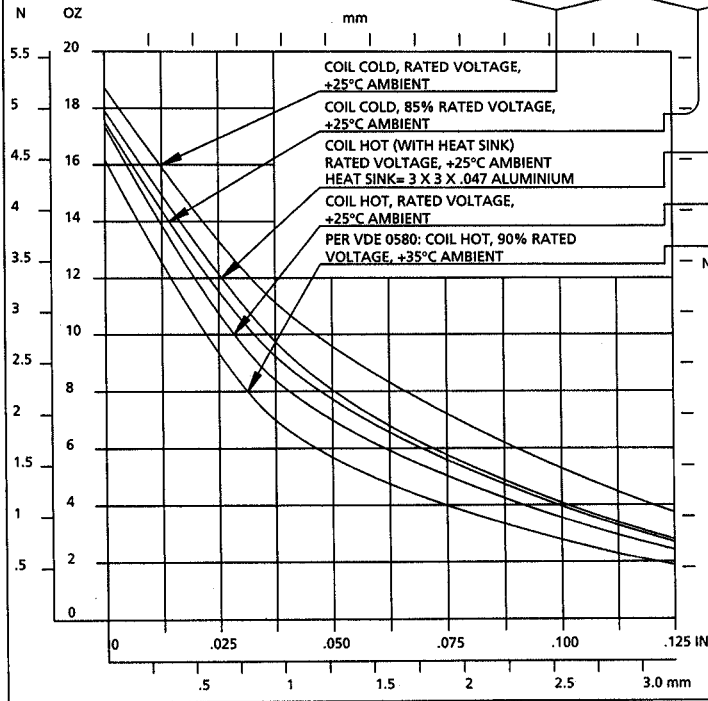
FORCE DATA
2U1 INTERMITTENT DUTY

SIGNATURES	DATE	DWG NO.
DRAWN G. JAROS	05/08/00	F0471
CHECKED		



PULSE DUTY

STROKE				FORCE DATA							
INCHES	mm	OZ	N	OZ	N	OZ	N	OZ	N	OZ	N
HOLDING	HOLDING	18.72	5.20	17.52	4.87	17.91	4.98	17.36	4.83	16.17	4.49
.010	0.25	16.46	4.58	15.00	4.17	15.52	4.31	14.54	4.04	13.24	3.68
.025	0.64	13.32	3.70	11.54	3.21	12.15	3.38	10.76	2.99	9.35	2.60
.050	1.27	9.58	2.66	7.72	2.15	8.00	2.22	6.99	1.94	5.68	1.58
.100	2.54	5.28	1.47	3.96	1.10	4.08	1.13	3.54	0.98	2.77	0.77
.125	3.18	3.74	1.04	2.69	0.75	2.78	0.77	2.42	0.67	1.88	0.52



MAGNET-SCHULTZ OF AMERICA, INC.
401 PLAZA DRIVE WESTMONT, IL 60559

ON TIME	.10 Seconds
OFF TIME	1.9 Seconds
DUTY CYCLE	5%

FORCE DATA
2U1 PULSE DUTY

SIGNATURES	DATE	DWG NO.
DRAWN G. JAROS	05/23/00	F047P
CHECKED		



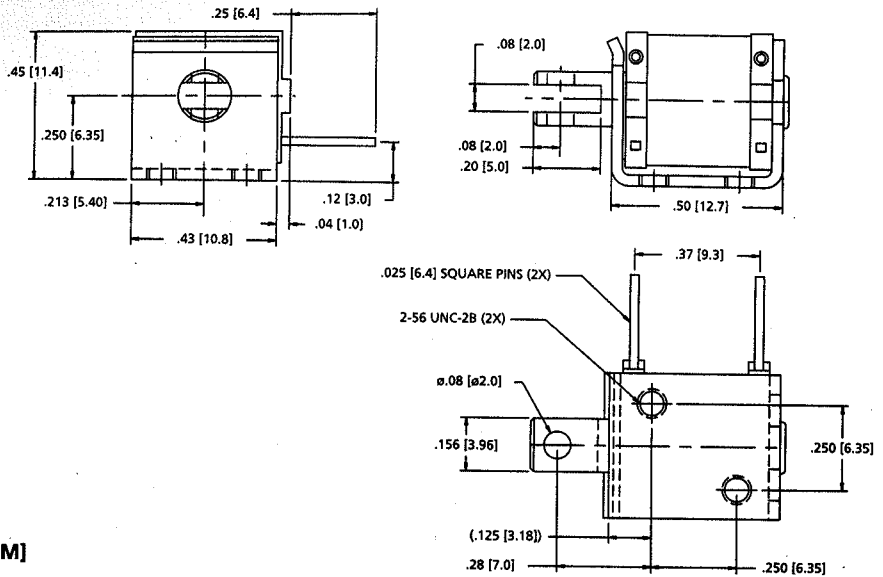
2U1

PULL TYPE

Pin Terminal Part No.	Lead Wire Part No.	Duty Cycle	V (VDC)	Coil Res. (Ohms)
S-7752	—	C	12	115.0
S-7755	—	C	24	461.0
S-7753	—	I	12	30.6
S-7756	—	I	24	122.6
S-7754	—	P	12	6.9
S-7757	—	P	24	27.4

C = Continuous
I = Intermittent
P = Pulse

DIMENSIONS



In [MM]

SPECIFICATIONS

Voltage Range

- Standard Voltages DC 6, 12, 24
- Other voltages available upon request

Power Rating

- Continuous Duty: 1.25 Watts
- Intermittent Duty: 4.7 Watts
- Pulse Duty: 21 Watts

Holding Force

- Continuous Duty: 6 oz.
- Intermittent Duty: 14 oz.
- Pulse Duty: 18 oz.

Insulation Material

- Class "B" (130° C) Standard
- Other classes available

Dielectric Strength

- 500 V, 60 Hz

Coil Termination

- .025 Square pins
- Lead wires also available

Total Weight

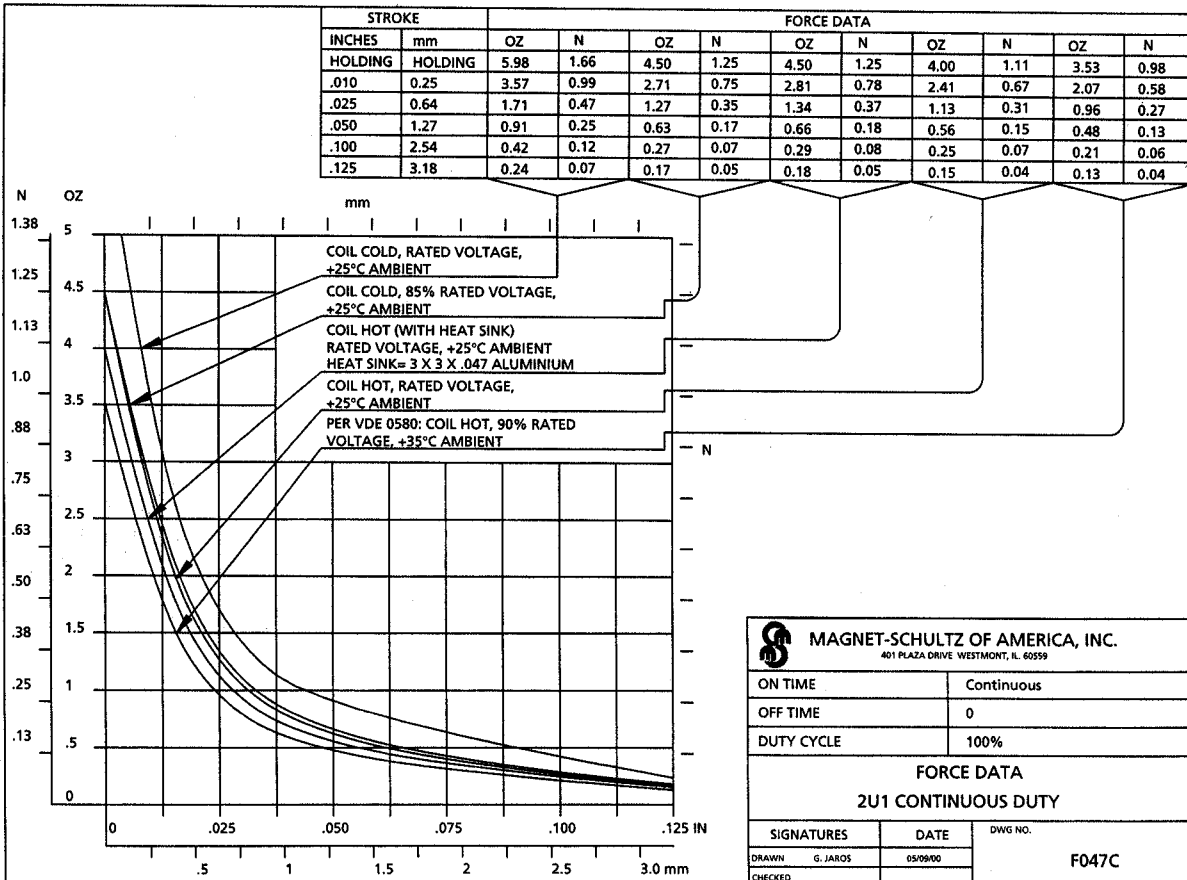
- 0.2 ounces
- 5.7 grams approximate

UL Recognized Materials

Special Options

- push type
- spring return

CONTINUOUS DUTY



MAGNET-SCHULTZ OF AMERICA, INC.
401 PLAZA DRIVE WESTMONT, IL 60559

ON TIME	Continuous	
OFF TIME	0	
DUTY CYCLE	100%	
FORCE DATA		
2U1 CONTINUOUS DUTY		
SIGNATURES	DATE	DWG NO.
DRAWN G. JAROS	05/09/00	F047C
CHECKED		

